



# Fingerspelling

September 20-26, 2020

Celebrate with us!



North Dakota School for the Deaf Parent-Infant Program and School Age Outreach Department  
Nicole, Denise, Carol, Linda, Ashley and Lana

**Deaf Awareness Week** is a national **week** of **celebrating deafness**.

It is observed annually throughout the last full **week** of September.

The **week** focuses on promoting the positive aspects of **deafness**, encouraging social inclusion, and raising **awareness** of the organizations that support those who are **deaf**.

## SOME of the Services that we provide:

### Parent-Infant Program (0-5 yrs.)

- Family Support and Education Centered
- Language and Auditory Fun
- Assistance in developing Individualized Family Service Plan
- Information on education and communication choices

### School Age Outreach (3-21 yrs.)

- Assessments
- Sign Language
- Developmental
- Transition
- Youth activities
- Consultations
- ❖ In-Services
- ❖ Observations
- ❖ IEP and/or 504 Planning
- ❖ Classroom strategies,



**Any questions or concerns on children with hearing loss, contact a regional outreach office.**

Carol Lybeck, Coordinator PHONE: 701.665-4400 Carol.Lybeck@k12.nd.us	Denise Marback, Northeast PHONE: 701-665-4420 Denise.Marback@k12.nd.us	Nicole Swartwout, Northwest PHONE: 701-858-3357 Nicole.Swartwout@k12nd.us
Lana Zimbelman, Southwest PHONE: 701-328-3987 Lana.Zimbelman@k12.nd.us	Linda Ehlers, Southeast PHONE: 701-239-7373 Linda.Ehlers@k12nd.us	Ashley Martin, Sign Language PHONE 701-239-7375 Ashley.Martin@K12.nd.us

I have...  **S**

Who has?  **P**

Compliments of North Dakota School for the Deaf Outreach Department  
Signs graphic from classroomclipart.com

I have...  **P**

Who has?  **A**

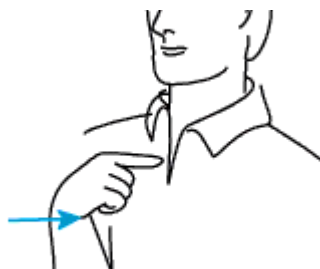
Compliments of North Dakota School for the Deaf Outreach Department  
Signs graphic from classroomclipart.com

### MATERIALS:

Print out and cut cards. Its best if done on cardstock and laminated.

TO PLAY: Hand out all the cards until they are gone. You may want to review the manual alphabet before starting. You can start with any letter of the alphabet. The person who has that card signs, "I have....." "Who has....?" This continues until every card has been used.

I have...



**I**

Index finger points to and touches chest.



**HAVE**

Fingertips of both slightly bent hands touch chest.

Who has?



**WHO**

Thumb of L-hand on chin, wiggle index finger.



**HAS**

Fingertips of both slightly bent hands touch chest.

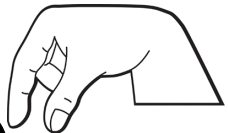
NOTE: "HAVE" and "HAS" are the same sign in American Sign Language.

I have...



A

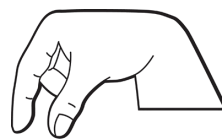
Who has?



Q

Compliments of North Dakota School for the Deaf Outreach Department  
Signs graphic from classroomclipart.com

I have...



Q

Who has?



Y

Compliments of North Dakota School for the Deaf Outreach Department  
Signs graphic from classroomclipart.com

I have...



Y

Who has?



B

Compliments of North Dakota School for the Deaf Outreach Department  
Signs graphic from classroomclipart.com

I have...



B

Who has?



D

Compliments of North Dakota School for the Deaf Outreach Department  
Signs graphic from classroomclipart.com

I have...



D

Who has?



R

Compliments of North Dakota School for the Deaf Outreach Department  
Signs graphic from classroomclipart.com

I have...



R

Who has?



C

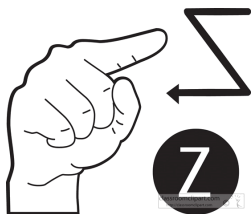
Compliments of North Dakota School for the Deaf Outreach Department  
Signs graphic from classroomclipart.com

I have...



C

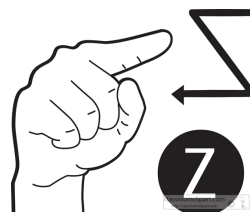
Who has?



Z

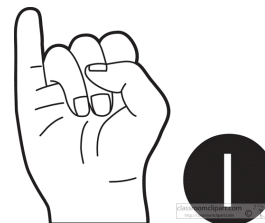
Compliments of North Dakota School for the Deaf Outreach Department  
Signs graphic from classroomclipart.com

I have...



Z

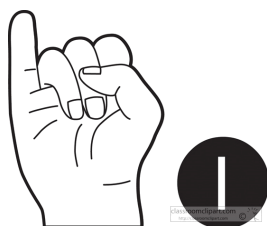
Who has?



I

Compliments of North Dakota School for the Deaf Outreach Department  
Signs graphic from classroomclipart.com

I have...



I

Who has?



X

Compliments of North Dakota School for the Deaf Outreach Department  
Signs graphic from classroomclipart.com

I have...



X

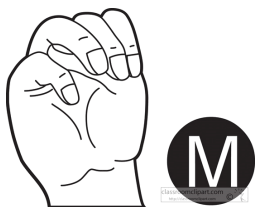
Who has?



M

Compliments of North Dakota School for the Deaf Outreach Department  
Signs graphic from classroomclipart.com

I have...



M

Who has?



W

Compliments of North Dakota School for the Deaf Outreach Department  
Signs graphic from classroomclipart.com

I have...



W

Who has?



G

Compliments of North Dakota School for the Deaf Outreach Department  
Signs graphic from classroomclipart.com

I have...



G

Who has?



V

Compliments of North Dakota School for the Deaf Outreach Department  
Signs graphic from classroomclipart.com

I have...



V

Who has?



T

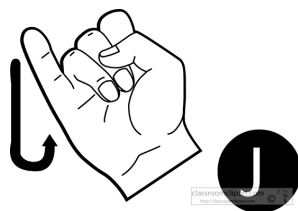
Compliments of North Dakota School for the Deaf Outreach Department  
Signs graphic from classroomclipart.com

I have...



T

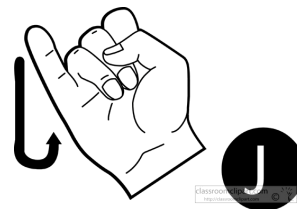
Who has?



J

Compliments of North Dakota School for the Deaf Outreach Department  
Signs graphic from classroomclipart.com

I have...



J

Who has?



E

Compliments of North Dakota School for the Deaf Outreach Department  
Signs graphic from classroomclipart.com

I have...



E

Who has?



L

Compliments of North Dakota School for the Deaf Outreach Department  
Signs graphic from classroomclipart.com

I have...



L

Who has?

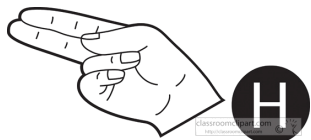


H

Compliments of North Dakota School for the Deaf Outreach Department  
Signs graphic from classroomclipart.com

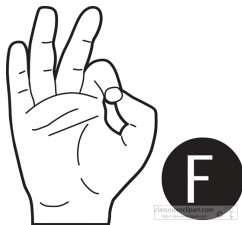


I have...



H

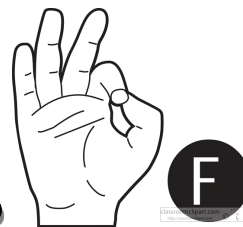
Who has?



F

Compliments of North Dakota School for the Deaf Outreach Department  
Signs graphic from classroomclipart.com

I have...



F

Who has?



U

Compliments of North Dakota School for the Deaf Outreach Department  
Signs graphic from classroomclipart.com

I have...



U

Who has?



N

Compliments of North Dakota School for the Deaf Outreach Department  
Signs graphic from classroomclipart.com

I have...



N

Who has?



K

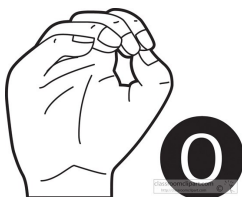
Compliments of North Dakota School for the Deaf Outreach Department  
Signs graphic from classroomclipart.com

I have...



K

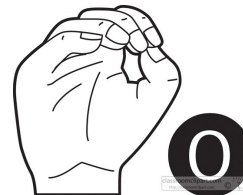
Who has?



O

Compliments of North Dakota School for the Deaf Outreach Department  
Signs graphic from classroomclipart.com

I have...



O

Who has?



S

Compliments of North Dakota School for the Deaf Outreach Department  
Signs graphic from classroomclipart.com

# Manual Alphabet and Numbers 1-15

(sign drawings from Wikipedia Commons)



**A**

Fist with thumb on side.



**B**

Four fingers up together with thumb tucked on palm.



**C**

Make C with four fingers curved over thumb



**D**

Index finger up, rest of fingertips on thumb



**E**

Fingertips touching side of thumb



**F**

Index fingertip on thumb, three fingers up.



**G**

Index finger and thumb parallel to each other.



**H**

Index and middle fingers together and horizontal.



**I**

Pinky up.



**J**

Draw a J with pinky



**K**

Middle finger moved forward, index finger up, and thumb in-between.



**L**

Make an L with index finger and thumb



**M**

Index, middle and ring finger extends over thumb



**N**

Index and middle finger extends over thumb



**O**

Make an O with fingertips on thumb



**P**

Thumb between index and middle finger, palm-in



**Q**

Index finger and thumb parallel and pointing down



**R**

Cross index and middle fingers.



**S**

Fist with thumb in front of fingers.



**T**

Fist with thumb between index and middle fingers.



**U**

Index and middle fingers together up.



**V**

Index and middle fingers make V-hand



**W**

Index, middle and ring fingers make a W-hand



**X**

Fist with extended bent index finger,



**Y**

Fist with thumb and pinky extended.



**Z**

Draw the letter Z with index finger.



**1**

Palm in, index finger up.



**2**

Palm-in, index and middle fingers up.



**3**

Palm-in, index, middle and thumb out.



**4**

Palm-in, all four fingers up.



**5**

Palm-in, all four fingers up and thumb out



**6**

Palm-out, pinky touches tip of thumb



**7**

Palm-out, ring finger touches tip of thumb



**8**

Palm-out, middle finger touches tip of thumb



**9**

Palm-out, index finger touches tip of thumb



**10**

Palm-out, thumb up, shake left to right



**11**

Palm-in, index finger flips up off thumb twice



**12**

Palm-in, index and middle fingers flips up off thumb



**13**

Palm-in, thumb out, index and middle fingers wiggle together.



**14**

Palm-in and thumb in, four fingers wiggle together.



**15**

Palm-in and thumb out, four fingers wiggle together.

# Points of the Compass

This worksheet is designed to make you repeat the process of moving around a grid following the directions provided. For each answer to be found there is a starting point (a gray box with manual number) Count a given number of squares in a given direction to collect the manual letters. So, for example, the instruction **S6** means that they should move across the worksheet's letter grid in a **southerly** direction for a total count of 6 squares. If you get it right, you will collect the right manual letters to make 14 different words which is a quote from Mark Twain.



		<b>6</b>				<b>11</b>								
									<b>1</b>			<b>9</b>		
														<b>4</b>
				<b>2</b>				<b>7</b>						
														<b>10</b>
		<b>3</b>						<b>13</b>						
					<b>14</b>									
<b>12</b>							<b>8</b>			<b>5</b>				



# Points of the Compass

Starting from each number (1-14), move around the grid to collect letters to make fourteen different words.

- ❖ W5 means move 5 squares to the West (to the left)
- ❖ N4 means move 4 squares to the North (up)
- ❖ E3 means move 3 squares to the East (to the right)
- ❖ S7 means move 7 squares to the South (down)



	<b>E2</b>	<b>S3</b>	<b>S3</b>	<b>W9</b>	<b>N5</b>	<b>E5</b>	<b>N2</b>	<b>E5</b>	
1.									
	<b>S2</b>	<b>E7</b>			<b>N1</b>	<b>E11</b>	<b>S3</b>		
2.				3.					
	<b>W9</b>	<b>N2</b>	<b>N1</b>	<b>W1</b>	<b>S8</b>	<b>E7</b>	<b>W5</b>	<b>N3</b>	
4.									
	<b>W2</b>	<b>N7</b>	<b>N1</b>	<b>W7</b>	<b>S5</b>				
5.									
	<b>S5</b>	<b>W1</b>	<b>E4</b>			<b>N1</b>	<b>S2</b>	<b>W8</b>	<b>N3</b>
6.					7.				
	<b>N5</b>	<b>W4</b>	<b>S4</b>			<b>W6</b>	<b>S4</b>	<b>E3</b>	<b>S2</b>
8.					9.				
	<b>W5</b>	<b>N3</b>	<b>E3</b>			<b>S7</b>	<b>E8</b>	<b>N3</b>	
10.					11.				
	<b>E3</b>	<b>N2</b>	<b>E11</b>	<b>N5</b>	<b>W11</b>				
12.									
	<b>E2</b>	<b>S1</b>	<b>E2</b>			<b>N3</b>	<b>E8</b>	<b>S4</b>	
13.					14.				

ANSWER: Kindness is the language which the Deaf can hear and the Blind can see.

# How to access services from North Dakota School for the Deaf/ Resource Center on Deaf and Hard of Hearing

Families, school districts, area education agencies, other interested individuals and North Dakota School for the Deaf/Resource Center on Deaf and Hard of Hearing (NDSD/RCDHH) work together to provide appropriate services...

## For on-site school-age programs:

- 1** Contact your local school district
- 2** Contact North Dakota School for the Deaf.  
Superintendent: 701-665-4400  
Toll Free: 1-800-887-2980
- 3** Tour North Dakota School for the Deaf's campus with your area education agency and local school district staff
- 4** Work with your school district to schedule an IEP meeting to determine placement that includes a NDSD/RCDHH representative.



A Division of the  
ND Department of Public Instruction,  
Kirsten Baesler, Superintendent

## Parent-Infant Programs & School Age Outreach Regional Offices

**Program Coordinator**  
1401 College Drive North  
Devils Lake, ND 58103  
(701) 665-4400  
Toll Free: 1-800-887-2980

**Northwest**  
Memorial Hall  
500 University Avenue West  
Minot, ND 58701  
(701) 858-3357

**Southwest**  
418 East Broadway, Suite 228  
Bismarck, ND 58501  
(701) 328-3987 or  
123 Summit Street  
Underwood, ND 58576  
(701) 215-1718

**Northeast**  
1401 College Drive North  
Devils Lake, ND 58301  
(701) 665-4420

**Southeast**  
1321 23rd Street South,  
Suite A  
Fargo, ND 58103  
(701) 239-7373  
(701) 239-7375



## To access Outreach Services:

- 1** Contact the designated person listed below for each service area:

**Parent-Infant Program:**  
(For birth to age five)  
Carol Lybeck.....701-665-4400  
[Carol.Lybeck@k12.nd.us](mailto:Carol.Lybeck@k12.nd.us)

**School Age Services:**  
(Assessments & Consultations)  
Carol Lybeck...701-665-4400  
[Carol.Lybeck@k12.nd.us](mailto:Carol.Lybeck@k12.nd.us)

**Adult Services:**  
Pam Smith.....701-665-4401  
[Pam.Smith@k12.nd.us](mailto:Pam.Smith@k12.nd.us)

**Interpreting/Communication**  
Lilia Bakken.....701-665-4423  
[Lilia.Bakken@k12.nd.us](mailto:Lilia.Bakken@k12.nd.us)

**Summer Camps**  
Linda Ehlers.....701-237-7374  
[Linda.A.Ehlers@k12.nd.us](mailto:Linda.A.Ehlers@k12.nd.us)

North Dakota School for the Deaf does not discriminate on the basis of race, color, national origin, sex, age or disability in employment or provision of services