



Deaf Trivia

September 20-26, 2020

Celebrate with us!



North Dakota School for the Deaf Parent-Infant Program and School Age Outreach Department
Nicole, Denise, Carol, Linda, Ashley and Lana

Deaf Awareness Week is a national **week** of **celebrating deafness**.

It is observed annually throughout the last full **week** of September.

The **week** focuses on promoting the positive aspects of **deafness**, encouraging social inclusion, and raising **awareness** of the organizations that support those who are **deaf**.

SOME of the Services that we provide:

Parent-Infant Program (0-5 yrs.)

- Family Support and Education Centered
- Language and Auditory Fun
- Assistance in developing Individualized Family Service Plan
- Information on education and communication choices

School Age Outreach (3-21 yrs.)

- Assessments
- Sign Language
- Developmental
- Transition
- Youth activities
- Consultations
- ❖ In-Services
- ❖ Observations
- ❖ IEP and/or 504 Planning
- ❖ Classroom strategies, modifications, accommodations



Any questions or concerns on children with hearing loss, contact your regional outreach office.

Carol Lybeck, Coordinator PHONE: 701.665-4400 Carol.Lybeck@k12.nd.us	Denise Marback, Northeast PHONE: 701-665-4420 Denise.Marback@k12.nd.us	Nicole Swartwout, Northwest PHONE: 701-858-3357 Nicole.Swartwout@k12nd.us
Lana Zimbelman, Southwest PHONE: 701-328-3987 Lana.Zimbelman@k12.nd.us	Linda Ehlers, Southeast PHONE: 701-239-7373 Linda.Ehlers@k12nd.us	Ashley Martin, Sign Language PHONE 701-239-7375 Ashley.Martin@K12.nd.us

How to celebrate Deaf Awareness Week

North Dakota School for the Deaf

North Dakota School for the Deaf was established in 1890. It used to be self sufficient, meaning it grew its own food. Check out the following to watch a video of North Dakota School for the Deaf during the 1950-1960s.

https://media.gallaudet.edu/media/North+Dakota+school+for+the+Deaf/1_tksdici1/158896001

Fingerspelling

Learn how to fingerspell your name.



MY

Flat hand on chest



NAME IS

Index and middle finger of one hand touches other index and middle finger at right angles

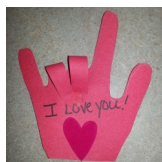
Sean Forbes

Sean Forbes is a Deaf hip-hop artist. On February 21, 2020 Sean released a new album called "Little Victories" and within the week hit #1 on the iTunes and Amazon hip-hop charts and #1 on Amazon for digital sales.

Check out his video. Go to <https://www.youtube.com/watch?v=5JaUg94oazM>

Make I Love You Craft

Trace your hand on construction paper or foam. Cut them out. Glue the middle and ring fingers down.



You can add stems for a bouquet or glue on a circle for a wreath or place a magnet on back for the refrigerator.

Learn about Achievements of Deaf people

Check out this site that celebrates the achievements of deaf people in history, and those who are still active in their careers.

Deafpeople.com

ASL Nook

Check out this website and enjoy a family sharing signs for a variety of topics.

<https://aslnook.com/>



Go to the Local Library

Check out your local library to see if they have book on sign language.

Perhaps they have Signing Time DVD's that combines sign lessons with songs.



I Love You

Tell someone that you love them with I-Love-You sign or better yet, I-Really-Love-You.



I Love You



I Really Love You

North Dakota School for the Deaf turns 130

North Dakota School for the Deaf was established in September 1890. Check out the PowerPoint created by Lilia Bakken, Communications Director on the dedicated landmarks at the school. It also shows the history.

<https://www.nd.gov/ndsd/sites/ndsd/files/documents/history/docs/NDSD%20Landmarks.pdf>



Deaf Trivia



1. What percentage of English speech sounds is actually visible on the lips?

- A. 30%
- B. 50%
- C. 75%
- D. 90%



123RF.com

2. When utilizing a sign language interpreter, how should you behave?

- A. When you talk, look at the interpreter
- B. When you talk, look at the deaf individual
- C. Proudly tell the interpreter you can communicate without him/her
- D. Tell the deaf person to speak

3. Historically, American Sign Language is related to:

- A. British Sign Language
- B. German Sign Language
- C. French Sign Language
- D. Swedish Sign Language

4. American Sign Language is used by most Deaf people in which of the following countries? (2 answers)

- A. Canada
- B. United States
- C. Mexico
- D. Brazil



Augusta County Library

5. What percent of Deaf people have Deaf parents?

- A. 10 percent
- B. 25 percent
- C. 50 percent
- D. 75 percent



Clipart Panda

6. To get a Deaf person's attention who is looking the other way, you should:

- A. Yell as loud as you can
- B. Tap him/her on the shoulder
- C. Wave in his/her face
- D. go around and stand in front



WebStock Review

7. While watching another person sign, it is appropriate to focus on the signer's:

- A. Hands
- B. Chest area
- C. Face



Charleston Gazette

ANSWER KEY:

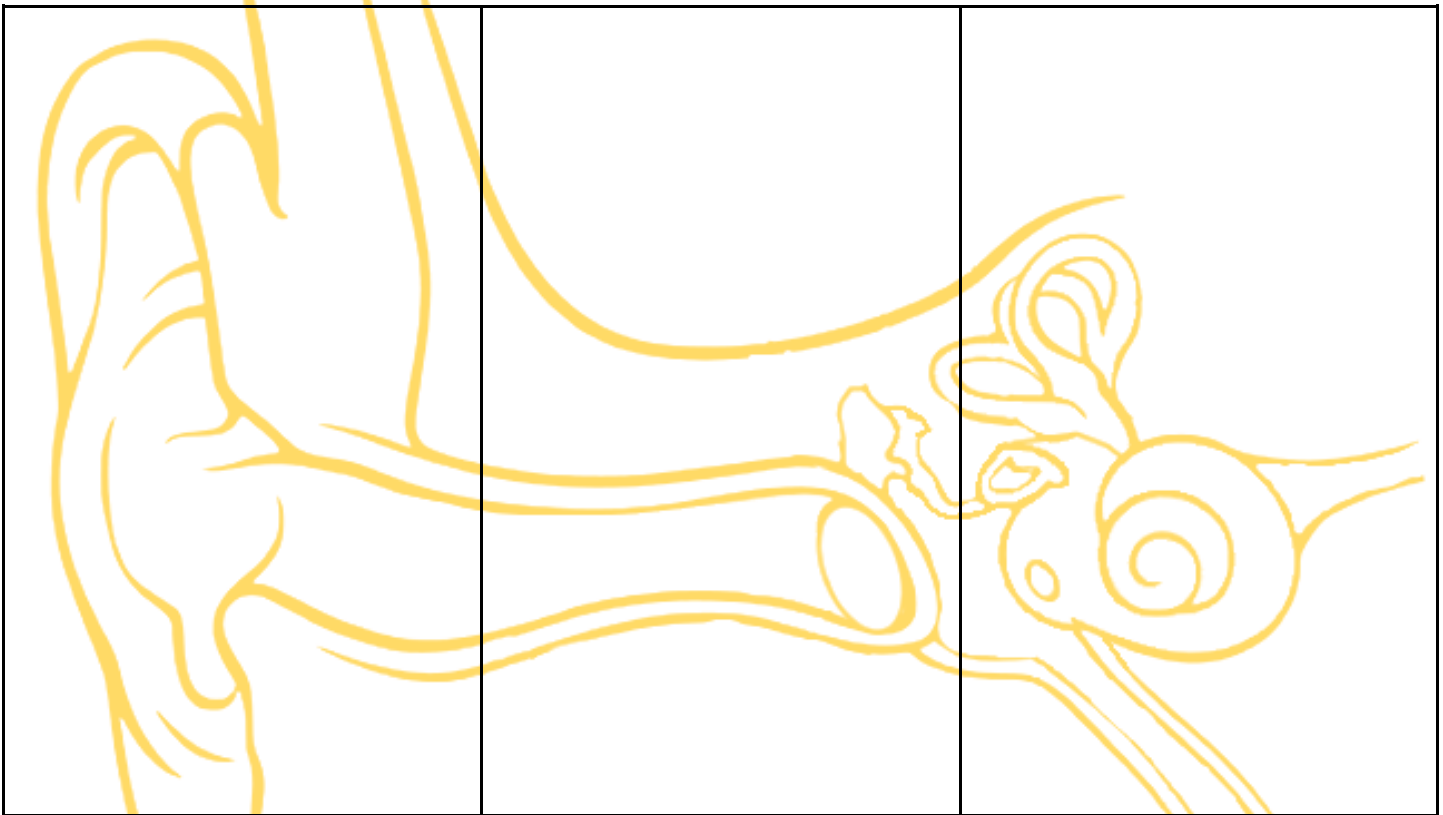
1. **A.** English is not a particularly easy language to speechread.
2. **B.** Always look at the Deaf individuals and do not refer to that person in third person, such as, "Tell him/her...."
3. **C.** American Sign Language came from a sign system developed in France. A French Deaf man, Laurent Clerc, was brought over to teach deaf students in United States.
4. **A and B.** Other countries have their own sign language such as Japanese Sign Language and British Sign Language.
5. **A.** Majority of babies with hearing loss are born to hearing parents with no family history of hearing loss.
6. **B.** Be sure to tap gently.
7. **C.** A lot of the meanings and grammar of American Sign Language comes from facial expressions.

Deaf Awareness: True or False?

TRUE

MAYBE

FALSE



Cut and stick these statements to show whether you think each one is true or false. If you think the answer could be true sometimes, but false other times, you can put it in the "MAYBE" column. Be prepared to explain some of your decisions.

1. All deaf people understand sign language.	2. It is not safe to have deaf drivers on the road.	3. Deaf people can go to a university or college.
4. Some deaf people cannot talk.	5. Many Deaf people enjoy music.	6. All deaf people can lip-read.
7. All people with hearing loss benefit from a hearing aid?	8. Hearing Aids mean that deaf people can hear everything clearly.	9. All deaf people are the same.
10. Sign Language is the same all over the world.	11. Deaf people can speak to people on the phone.	12. All deaf people can read Braille.
13. Deaf people can have a job.	14. It is no longer correct to use the terms "deaf-mute" or "deaf and dumb."	15. Deaf people are unable to live independently.

Adapted from TWINKL

Deaf Awareness: True or False Answers

1. FALSE: With technology and majority being mainstreamed in their home schools, there are many who do not use sign language to communicate.	2. FALSE: Deaf drivers are as safe as any other driver. Some say because they rely on their vision that they are safer drivers.	3. TRUE: Many go on to more schooling after high school and become professionals.
4. FALSE: People who are deaf can talk, but some choose not to use their voice because they cannot hear it to regulate clarity, pronunciation, tone and loudness.	5. TRUE: Some deaf people play musical instruments and may enjoy dancing, sign singing and watching captioned music videos. Members of some dance troupe rely upon sounds amplification or vibrations to follow the music.	6. FALSE: Lip-reading is a difficult skill to master. Success depends on the speaker's presentation and the listener knowledge and visual acuity as well as the environment conversation is given.
7. FALSE: The effectiveness of hearing aids depends on degree of hearing loss, auditory training and tolerance of sound amplification.	8. FALSE: Hearing Aids amplify everything especially the vowel sounds. To hear words, it is the consonants that changes words such as cub, tub, sub or cat, hat, bat.	9. FALSE: Such as all hearing people are individuals, so are deaf people. Some wear hearing aids, cochlear implants, Bone Anchored Hearing Aids or none. Some have different nationalities, have different interests, etc.
10. Just as there are different spoken languages, there are different sign languages. In Canada and United States, they use American Sign Language. In England, they use British Sign Language and in Japan, Japanese Sign Language.	11. TRUE: Some deaf people can amplify the phone enough to hear on the phone. Others rely on relay video service that utilizes a sign language interpreter to assist with communication. Some phones type what is being said plus there is also texting.	12. FALSE: People who are blind read Braille. Deaf people who have visual problems may also read Braille.
13. TRUE There are deaf lawyers, doctors, dentists, engineers artists, scientists, business owners, pilots, politicians as well as other career fields of employment.	14. TRUE: These terms are considered insulting and out of date. The generally accepted terminology is people who are deaf or hard of hearing. "The term "hearing impaired" is also not encouraged to be used as well.	15. FALSE: As with hearing people, a good education makes it possible for deaf individuals to be independent and a contributing member of society.

Did you know...

Did you know?

The right ear is better at hearing speech.

The left ear is better at hearing music.

- did-you-kno.tumblr.com

did you know?

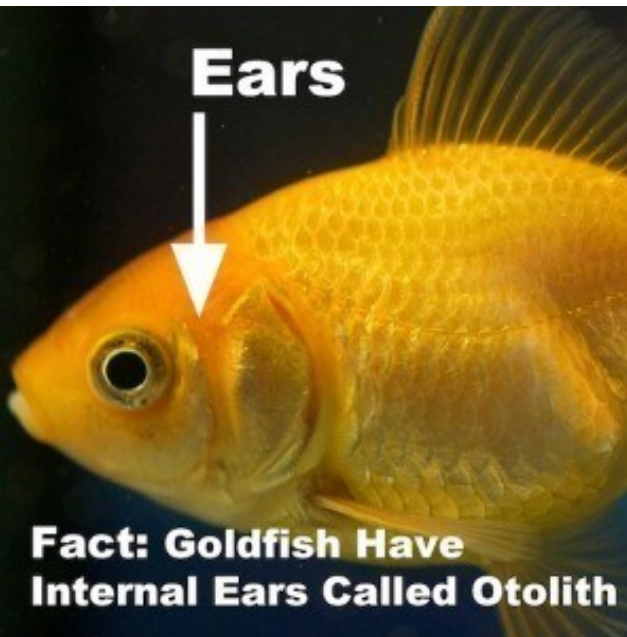
You can see an owl's eyeball through its ear.



PHOTO: IMGUR

DIDYOUKNOWBLOG.COM

Ears



Fact: Goldfish Have Internal Ears Called Otolith



The roar that we hear when we place a sea-shell next to our ear is not the ocean.

It is the sound of blood surging through the veins in the ear.

- SLACK Facts



DID YOU KNOW? Horses have 16 muscles in each ear, allowing them to rotate their ears 180 degrees; instinctively directing their ears toward what they are focusing on.



Equine Organix

pH-balanced Organic Chamomile
Grooming Products for Horse & Dog
www.EquineOrganix.com

How to access services from North Dakota School for the Deaf/ Resource Center on Deaf and Hard of Hearing

Families, school districts, area education agencies, other interested individuals and North Dakota School for the Deaf/Resource Center on Deaf and Hard of Hearing (NDSD/RCDHH) work together to provide appropriate services...

For on-site school-age programs:

- 1** Contact your local school district
- 2** Contact North Dakota School for the Deaf.
Superintendent: 701-665-4400
Toll Free: 1-800-887-2980
- 3** Tour North Dakota School for the Deaf's campus with your area education agency and local school district staff
- 4** Work with your school district to schedule an IEP meeting to determine placement that includes a NDSD/RCDHH representative.



A Division of the
ND Department of Public Instruction,
Kirsten Baesler, Superintendent

Parent-Infant Programs & School Age Outreach Regional Offices

Program Coordinator
1401 College Drive North
Devils Lake, ND 58103
(701) 665-4400
Toll Free: 1-800-887-2980

Northwest
Memorial Hall
500 University Avenue West
Minot, ND 58701
(701) 858-3357

Southwest
418 East Broadway, Suite 228
Bismarck, ND 58501
(701) 328-3987 or
123 Summit Street
Underwood, ND 58576
(701) 215-1718

Northeast
1401 College Drive North
Devils Lake, ND 58301
(701) 665-4420

Southeast
1321 23rd Street South,
Suite A
Fargo, ND 58103
(701) 239-7373
(701) 239-7375



To access Outreach Services:

- 1** Contact the designated person listed below for each service area:

Parent-Infant Program:
(For birth to age five)
Carol Lybeck.....701-665-4400
Carol.Lybeck@k12.nd.us

School Age Services:
(Assessments & Consultations)
Carol Lybeck...701-665-4400
Carol.Lybeck@k12.nd.us

Adult Services:
Pam Smith.....701-665-4401
Pam.Smith@k12.nd.us

Interpreting/Communication
Lilia Bakken.....701-665-4423
Lilia.Bakken@k12.nd.us

Summer Camps
Linda Ehlers.....701-237-7374
Linda.A.Ehlers@k12.nd.us

North Dakota School for the Deaf does not discriminate on the basis of race, color, national origin, sex, age or disability in employment or provision of services